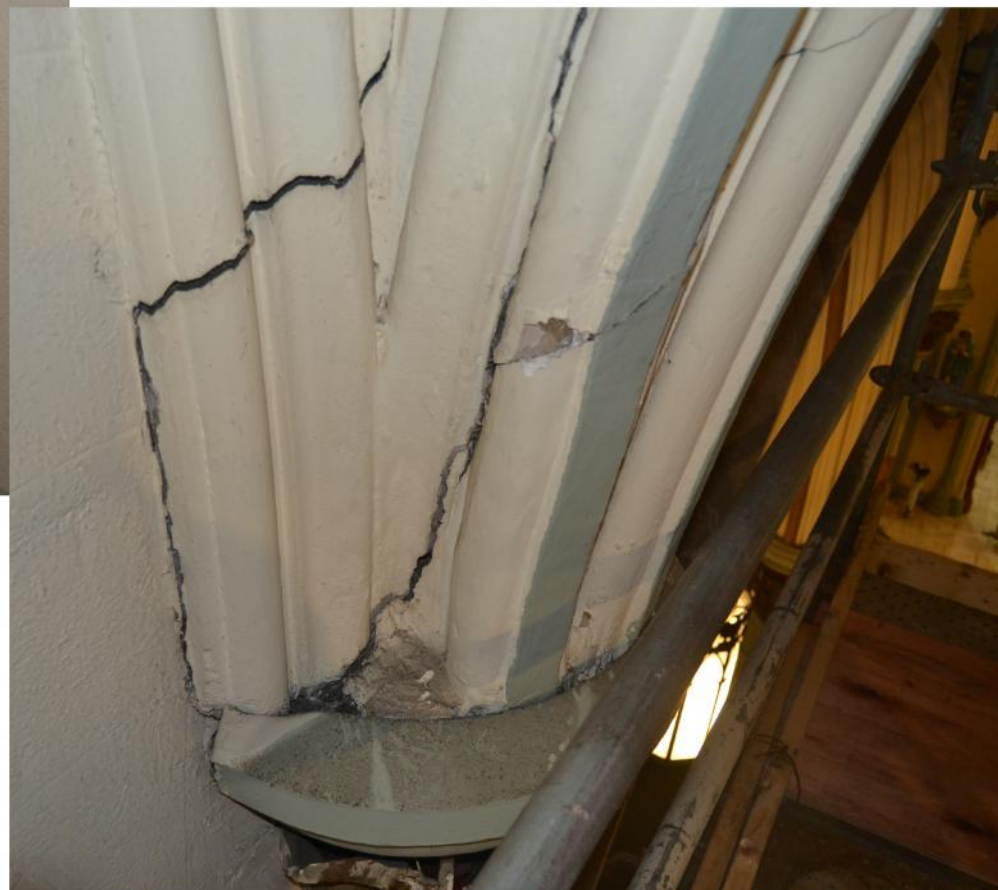




## PLASTER INVESTIGATION

AN AREA OF FOCUS — CRACKING OF PLASTER AT UPPER COLUMN CAPITALS AND THEIR ASSOCIATED RIBS.





COLUMN UPPER CAPITAL  
WOODEN BRACKET SUPPORT  
GRADUAL LONG-TERM MOVEMENT  
RESULTING IN CRACKING WITHIN  
SUPPORTING RIBS



REPAIRED BY NEW METAL  
BRACKET SUPPORT

COLUMN CAPITAL WAS DISSECTED TO INVESTIGATE CONDITIONS AND CONSTRUCTION.

DISCOVERED OLD WOODEN SUPPORTS THAT HAVE SHIFTED DOWN AFTER 150 YEARS, CAUSING CRACKS WITHIN THE RIBS ABOVE THE CAPITALS.

PROPOSED STRUCTURAL REPAIR INVOLVES REPLACING OLD WOODEN SUPPORT BRACKETS WITH FIRMLY SECURED METAL BRACKETS.

THE DISSECTED CAPITAL AND RIBS WERE REPAIRED BUT NOT REPAINTED, AS PICTURED TO THE RIGHT

ALL UPPER CAPITALS WERE REPAIRED IN 2016

